



SETRON, Fuse switch disconnecter 3NP1, 3-pole, NH1, 250 A, for Rittal busbar system 60 mm, flat terminal, Cover level 32/70 mm

Model	
product designation	Fuse switch disconnecter
busbar design	busbar thickness 5 or 10 mm
design of the safety monitoring	Without
design of the load switch strip form	No
type of the driving mechanism motor drive	No
General technical data	
number of poles	3
type of device	For Rittal 60 mm busbar system
size of disconnecting link	1 and 0
size of fuse link	NH0, NH1
let-through current with closed switch maximum	32 kA
mechanical service life (operating cycles) typical	1 600
I <sup>2</sup> t value with closed switch maximum	780 kA <sup>2</sup> .s
power factor	
• at AC-22 B	0.65
• at AC-23 B	0.45
• with capacitive load	-0.25
fuse system	LV HRC fuse
degree of pollution	3
Voltage	
insulation voltage	
• rated value	690 V
• with degree of pollution 3 at AC rated value	690 V
• with degree of pollution 2 at AC rated value	1 000 V
power factor at AC-21 B	0.95
surge voltage resistance rated value	8 kV
operational current	
• at 35 °C rated value	250 A
• at 40 °C rated value	245 A
• at 45 °C rated value	240 A
• at 50 °C rated value	233 A
• at 55 °C rated value	233 A
• at AC-21 B at 240 V rated value	250 A
• at AC-21 B at 400 V rated value	250 A
• at AC-21 B at 500 V rated value	250 A
• at AC-21 B at 690 V rated value	250 A
• at AC-22 B at 240 V rated value	250 A
• at AC-22 B at 400 V rated value	250 A
• at AC-22 B at 500 V rated value	250 A

<ul style="list-style-type: none"> <li>• at AC-22 B at 690 V rated value</li> <li>• at AC-23 B at 690 V rated value</li> <li>• at AC-23 B at 500 V rated value</li> <li>• at AC-23 B at 400 V rated value</li> <li>• at AC-23 B at 240 V rated value</li> <li>• at DC-21 B at 120 V rated value</li> <li>• at DC-21 B at 240 V rated value</li> <li>• at DC-21 B at 440 V rated value</li> <li>• at DC-22 B at 120 V rated value</li> <li>• at DC-22 B at 240 V rated value</li> <li>• at DC-22 B at 440 V rated value</li> <li>• at DC-23 B at 120 V rated value</li> <li>• at DC-23 B at 240 V rated value</li> <li>• at DC-23 B at 440 V rated value</li> </ul>	250 A 100 A 200 A 250 A 250 A 250 A 250 A 250 A 250 A 250 A 200 A 200 A 200 A 100 A
<b>let-through current with high-speed activation maximum permissible</b>	25 kA
<b>operating voltage</b> <ul style="list-style-type: none"> <li>• at AC rated value maximum</li> <li>• at DC rated value</li> <li>• at DC rated value maximum</li> </ul>	690 V 440 V 440 V
<b>Protection class</b>	
<b>protection class IP</b> <ul style="list-style-type: none"> <li>• with closed switch with cover or cable lug cover</li> <li>• with closed switch without cover or cable lug cover</li> <li>• open</li> </ul>	IP40 IP30 IP20
<b>Dissipation</b>	
<b>power loss [W]</b> <ul style="list-style-type: none"> <li>• with conventional rated thermal current without fuse per pole</li> <li>• with conventional rated thermal current without fuse per device</li> <li>• for rated value of the current at AC in hot operating state per pole</li> <li>• of the fuse per fuse maximum</li> </ul>	8 W 24 W 31 W 23 W
<b>Main circuit</b>	
<b>operational current</b> <ul style="list-style-type: none"> <li>• rated value</li> <li>• with capacitive load at 400 V rated value</li> <li>• with capacitive load at 500 V rated value</li> </ul>	250 A 72 A 55 A
<b>Auxiliary circuit</b>	
number of CO contacts for auxiliary contacts	0
<b>number of NC contacts for auxiliary contacts</b>	0
<b>number of NO contacts for auxiliary contacts</b>	0
<b>Suitability</b>	
<b>suitability for use main switch</b>	No
<b>suitability for use switch disconnecter</b>	Yes
<b>suitability for use EMERGENCY OFF switch</b>	No
<b>suitability for use safety switch</b>	Yes
<b>suitability for use maintenance/repair switch</b>	Yes
<b>Product details</b>	
product function phase failure monitoring	No
product component <ul style="list-style-type: none"> <li>• undervoltage release</li> <li>• undervoltage release with leading contact</li> </ul>	No No
product feature sealable	Yes
product extension auxiliary switch	Yes
<b>product extension optional</b> <ul style="list-style-type: none"> <li>• locking capability</li> <li>• phase failure monitoring</li> <li>• fuse monitoring</li> <li>• voltage trigger</li> <li>• overvoltage protection monitoring</li> </ul>	Yes Yes Yes No Yes

Product function	
product function overvoltage protection monitoring	No
Short circuit	
<b>conditional short-circuit current (I<sub>q</sub>)</b>	
• at AC at 240 V with high-speed activation rated value	80 kA
• at AC at 500 V with high-speed activation rated value	80 kA
• at AC at 690 V with high-speed activation rated value	50 kA
• with closed switch at AC at 240 V rated value	120 kA
• with closed switch at AC at 500 V rated value	120 kA
• with closed switch at AC at 690 V rated value	100 kA
Connections	
arrangement of electrical connectors for main current circuit	other
<b>connectable conductor cross-section for main contacts</b>	
• solid or stranded minimum	16 mm <sup>2</sup>
• solid or stranded maximum	150 mm <sup>2</sup>
• stranded minimum	16 mm <sup>2</sup>
• stranded maximum	150 mm <sup>2</sup>
<b>tightening torque with screw-type terminals</b>	
• minimum	10 N·m
• maximum	12 N·m
type of connectable conductor cross-sections of the laminated conductors maximum	25 x 18 mm
<b>type of connection technology</b>	Flat terminal
Mechanical Design	
<b>height</b>	306 mm
<b>width</b>	183.7 mm
<b>width of the busbar</b>	
• minimum	12 mm
• maximum	30 mm
<b>depth</b>	138 mm
<b>fastening method</b>	busbar
<b>fastening method</b>	
• floor mounting	No
• rail mounting	Yes
<b>mounting position</b>	horizontal/vertical
<b>busbar center-to-center spacing</b>	60 mm
<b>net weight</b>	2.85 kg
Environmental conditions	
<b>ambient temperature during operation</b>	
• minimum	-25 °C
• maximum	55 °C
<b>ambient temperature during storage</b>	
• minimum	-50 °C
• maximum	80 °C
Certificates	
<b>reference code according to IEC 81346-2</b>	Q
Approvals Certificates	
General Product Approval	



[Confirmation](#)



[Miscellaneous](#)

General Product Approval	Test Certificates	Marine / Shipping	other
--------------------------	-------------------	-------------------	-------



[Type Test Certificates/Test Report](#)

[Special Test Certificate](#)



[Miscellaneous](#)

other	Environment
-------	-------------

[Confirmation](#)

[Environmental Con-  
firmations](#)

[Environmental Con-  
firmations](#)

#### Further information

Information on the packaging

<https://support.industry.siemens.com/cs/ww/en/view/109813875>

Information- and Downloadcenter (Catalogs, Brochures,...)

<http://www.siemens.com/lowvoltage/catalogs>

Industry Mall (Online ordering system)

<https://mall.industry.siemens.com/mall/en/en/Catalog/product?mlfb=3NP1143-1JC10>

Service&Support (Manuals, Certificates, Characteristics, FAQs,...)

<https://support.industry.siemens.com/cs/ww/en/ps/3NP1143-1JC10>

Image database (product images, 2D dimension drawings, 3D models, device circuit diagrams, ...)

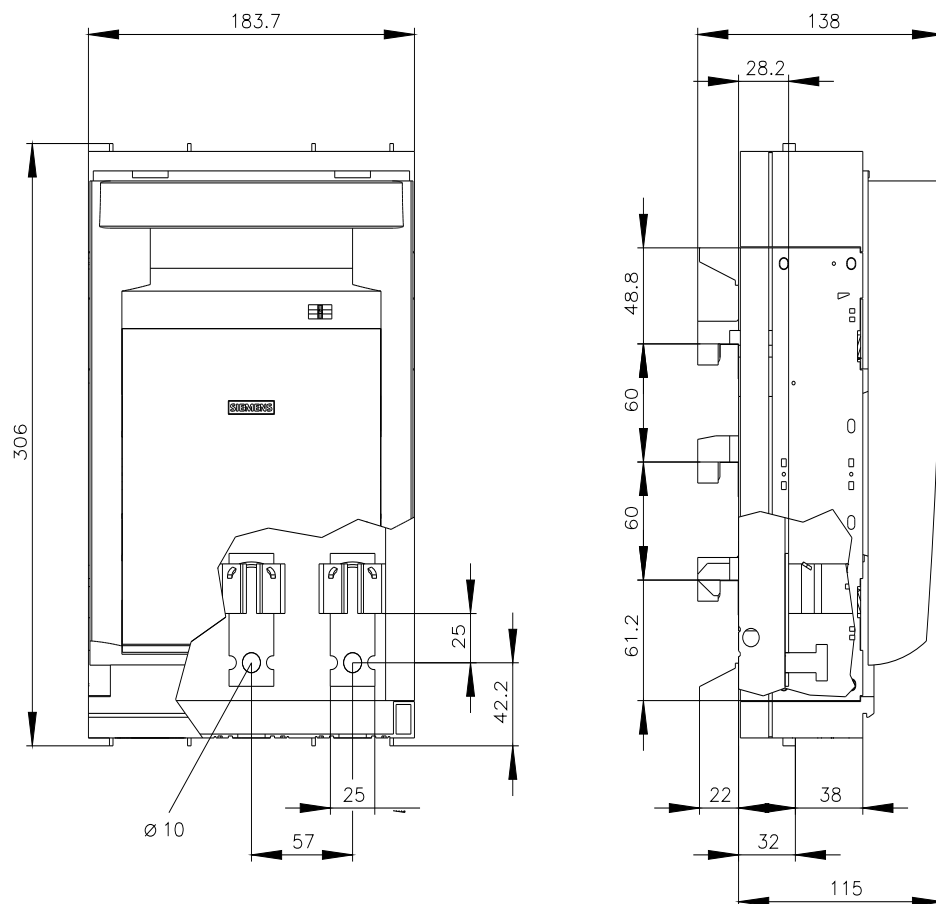
[http://www.automation.siemens.com/bilddb/cax\\_en.aspx?mlfb=3NP1143-1JC10](http://www.automation.siemens.com/bilddb/cax_en.aspx?mlfb=3NP1143-1JC10)

CAX-Online-Generator

<http://www.siemens.com/cax>

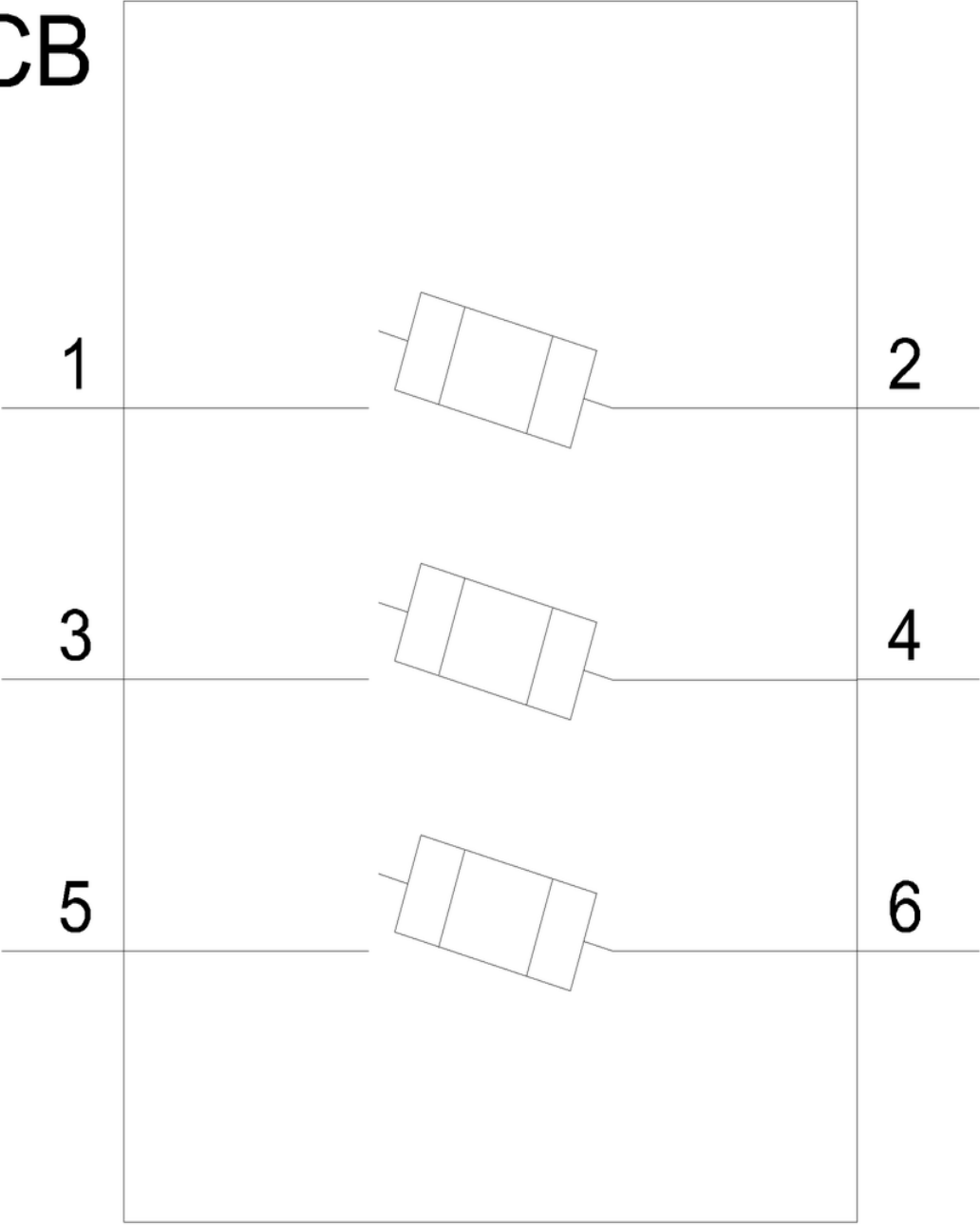
Tender specifications

<http://www.siemens.com/specifications>





CB



last modified:

9/28/2024 

