



Figure similar

SITOR fuse link, with female thread on both sides, In: 850 A, gR, Un AC: 600 V, Un DC: 250 V, front indicator

Model			
product brand name		SETRON	
product designation		SITOR fuse link	
design of the product		With female thread on both sides	
design of an identification indicator		front indicator	
design of the switching contact		with M10 female thread at both ends for direct busbar mounting. for air-cooled rectifiers in electrolysis systems	
design of the fuse link		Fuses for special applications	
General technical data			
size of fuse system according to EN 60269-1		others	
operating class of the fuse link		gR	
varying load factor (WL)		1	
type of voltage of the operating voltage		AC/DC	
operating voltage at AC according to UL rated value		600 V	
Supply voltage			
supply voltage			
• at AC		600 V	
• at DC		250 V	
Breaking Capacity			
switching capacity current			
• according to IEC 60947-2 rated value		100 kA	
Dissipation			
power loss [W]		85 W	
power loss [W]			
• for rated value of the current at AC in hot operating state per pole		85 W	
• maximum		85 W	
Product details			
product description		with female thread on both sides, silver-plated	
accessories included		no	
Mechanical Design			
mounting position		Any, preferably vertical	
Environmental conditions			
ambient temperature during operation			
• minimum		-20 °C	
• maximum		50 °C	
environmental category		-20 to +50 at 95% relative humidity	
Approvals Certificates			
General Product Approval		Test Certificates	other



other	Environment
-------	-------------

[Miscellaneous](#)

[Environmental Confirmations](#)

[Environmental Confirmations](#)

#### Further information

Information on the packaging

<https://support.industry.siemens.com/cs/ww/en/view/109813875>

Information- and Downloadcenter (Catalogs, Brochures,...)

<http://www.siemens.com/lowvoltage/catalogs>

Industry Mall (Online ordering system)

<https://mall.industry.siemens.com/mall/en/en/Catalog/product?mlfb=3NE9440-6>

Service&Support (Manuals, Certificates, Characteristics, FAQs,...)

<https://support.industry.siemens.com/cs/ww/en/ps/3NE9440-6>

Image database (product images, 2D dimension drawings, 3D models, device circuit diagrams, ...)

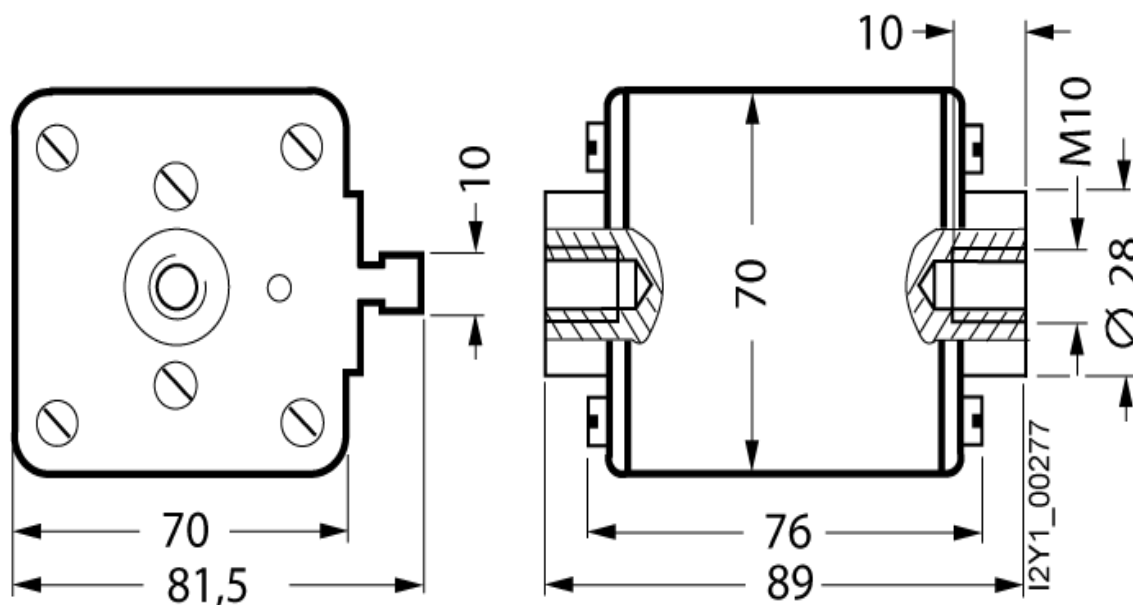
[http://www.automation.siemens.com/bilddb/cax\\_en.aspx?mlfb=3NE9440-6](http://www.automation.siemens.com/bilddb/cax_en.aspx?mlfb=3NE9440-6)

CAX-Online-Generator

<http://www.siemens.com/cax>

Tender specifications

<http://www.siemens.com/specifications>



last modified:

3/11/2024



