

Data sheet for SIMOTICS S-1FK7

MLFB-Ordering data

1FK7042-5AF71-1AA3

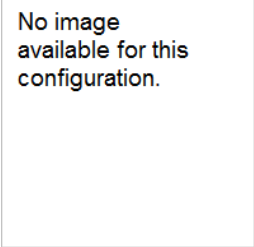


Figure similar

Client order no. :
 Order no. :
 Offer no. :
 Remarks :

Item no. :
 Consignment no. :
 Project :

Engineering data

Rated speed (100 K)	3000 rpm
Number of poles	8
Rated torque (100 K)	2.6 Nm
Rated current	1.9 A
Static torque (60 K)	2.50 Nm
Static torque (100 K)	3.00 Nm
Stall current (60 K)	1.80 A
Stall current (100 K)	2.20 A
Moment of inertia	3.010 kgcm ²
Efficiency	89.0 %

Physical constants

Torque constant	1.40 Nm/A
Voltage constant at 20° C	89.0 V/1000*min ⁻¹
Winding resistance at 20° C	5.15 Ω
Rotating field inductance	29.0 mH
Electrical time constant	5.60 ms
Mechanical time constant	2.37 ms
Thermal time constant	30 min
Shaft torsional stiffness	16000 Nm/rad
Net weight of the motor	4.9 kg

Mechanical data

Motor type	Permanent-magnet synchronous motor
Motor type	Compact
Shaft height	48
Cooling	Natural cooling
Radial runout tolerance	0.040 mm
Concentricity tolerance	0.08 mm
Axial runout tolerance	0.08 mm
Vibration severity grade	Grade A
Connector size	1
Degree of protection	IP64
Design acc. to Code I	IM B5 (IM V1, IM V3)
Temperature monitoring	KTY84 temperature sensor in the stator winding
Electrical connectors	Connectors for signals and power rotatable
Color of the housing	Standard (Anthracite RAL 7016)
Holding brake	without holding brake
Shaft end	Feather key
Encoder system	Encoder IC2048S/R: incremental encoder sin/cos 1 Vpp 2048 S/R with C and D track

MLFB-Ordering data

1FK7042-5AF71-1AA3

Figure similar

Optimum operating point

Optimum speed 3000 rpm

Optimum power 0.8 kW

Limiting data

Max. permissible speed (mech.) 9000 rpm

Max. permissible speed (inverter) 6500 rpm

Maximum torque 10.5 Nm

Maximum current 7.4 A

Recommended Motor Module

Rated inverter current 3 A

Maximum inverter current 6 A

Maximum torque 8.40 Nm

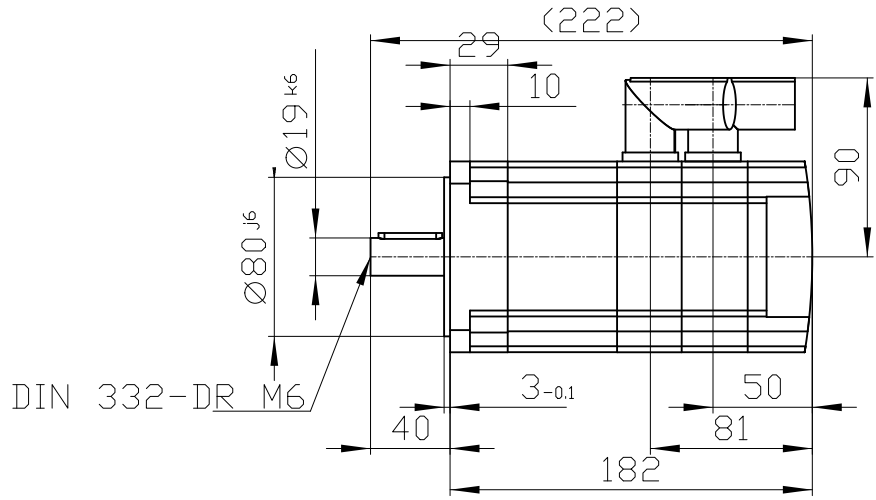
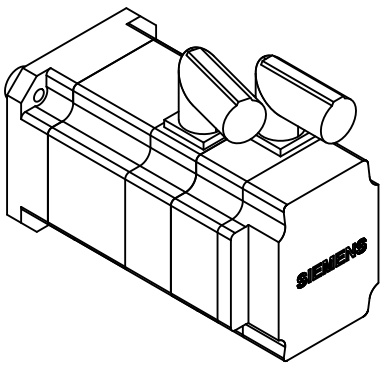
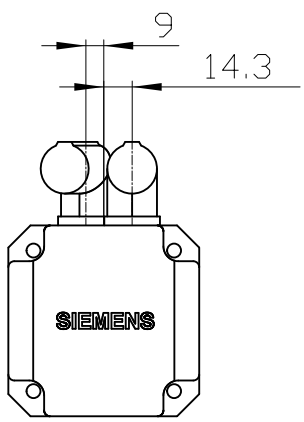
Copyright © Siemens AG 2005
 The reproduction or use of this document or its contents is not permitted without express written authority. Siemens AG and its divisions are not liable for damages. All rights, including patent rights, are reserved.

Copyright © Siemens AG 2005
 Die Vervielfältigung oder die Verwendung dieses Dokuments oder seines Inhalts ist ohne schriftliche Genehmigung Siemens AG und ihrer Divisionen ist nicht zulässig. Siemens AG und ihre Divisionen übernehmen keine Haftung für Schäden. Alle Rechte, insbesondere Patentrechte, sind vorbehalten.

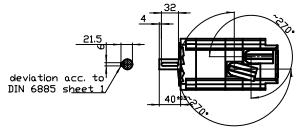
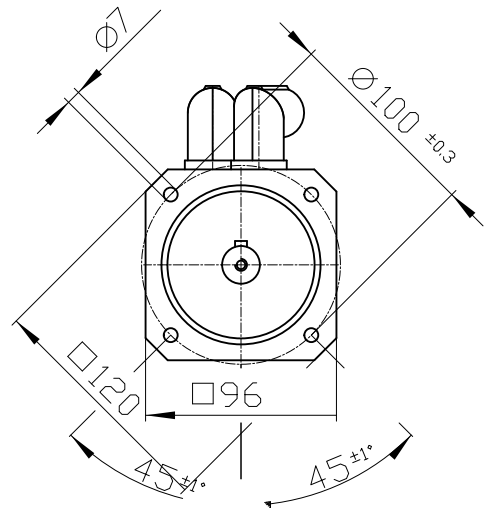
Confidencial como secreto industrial. Nos reservamos todos los derechos. Reservados todos los derechos. Reservados todos los derechos. Reservados todos los derechos.

Confidantiale als handelsgeheim. Wij behouden ons alle rechten voor. Behouden alle rechten. Behouden alle rechten. Behouden alle rechten.

Confidantiale als handelsgeheim. Wij behouden ons alle rechten voor. Behouden alle rechten. Behouden alle rechten. Behouden alle rechten.

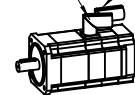


DIN 332-DR M6



Connector size 1 = M23;
 6-pole for power and brake

Connector size M23, 17-pole



		-
Unit	mm (in)	1FK7042-5AF71-1AA3
Date	2/27/23	
SIEMENS AG		-
		DT