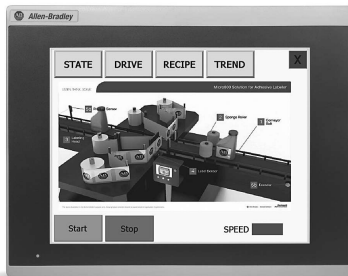




Catalog #: 2711R-T10T Disponibilidade Preferida

PanelView 800 10.4-Inch HMI Terminal with 65K Colors, Touch Screen TFT.Serial, Ethernet & USB ports.256 MB of Internal Storage and RAM

Lifecycle status: ACTIVE



## Technical Specifications

### Electrical

Number of HW-interfaces industrial Ethernet	1
Number of HW-interfaces RS-232	1
Number of HW-interfaces RS-422	1
Number of HW-interfaces RS-485	1
Number of HW-interfaces USB	1
Number of password levels	3
Number of grey-scales/blue-scales of display	0
Number of system buttons	0
Voltage type of supply voltage	DC
Number of function buttons, programmable	0
Number of online languages	8
Suitable for safety functions	No
Supporting protocol for TCP/IP	Yes
Supporting protocol for Modbus	Yes
Supporting protocol for Data-Highway	No
With colour display	Yes
Number of pixels, vertical	600
With numeric keyboard	Yes
With alpha numeric keyboard	Yes

With message indication	Yes
With message system (incl. buffer and confirmation)	Yes
Process value representation (output) possible	Yes
Process default value (input) possible	Yes
With recipes	Yes
With printer output	Yes
Additional software components, loadable	Yes
Supporting protocol for EtherNet/IP	Yes
Screen diagonal	10 inch
Number of pixels, horizontal	800
Useful project memory/user memory	32000 MB
Supply voltage DC	18 V
Touch technology	Resistive touch
Operator input	Analog touch
Power consumption	14 W @ 24V DC, 0.48 A
Operating system	WINCE 6.0
Backlight	Type: LED, Life: minimum 40000 hours
Software	Connected Components Workbench software, release 8.0 and later
Input voltage	18...32V DC (24V DC nominal)
Number of HW-interfaces serial TTY	0
Number of HW-interfaces parallel	0
Number of HW-interfaces other	0
Number of interfaces PROFINET	0
Number of HW-interfaces Wireless	0
Number of buttons with LED	0
Supporting protocol for LON	No
Supporting protocol for ASI	No
Supporting protocol for PROFIBUS	No
Supporting protocol for CAN	No
Supporting protocol for INTERBUS	No
Supporting protocol for KNX	No
Supporting protocol for DeviceNet	No
Supporting protocol for SUCONET	No

Supporting protocol for other bus systems	No
Supporting protocol for SERCOS	No
Supporting protocol for INTERBUS-Safety	No
Radio standard Bluetooth	No
Radio standard Wi-Fi 802.11	No
IO link master	No
Supporting protocol for AS-Interface Safety at Work	No
Supporting protocol for DeviceNet Safety	No
Supporting protocol for Foundation Fieldbus	No
Supporting protocol for PROFINET CBA	No
Supporting protocol for PROFINET IO	No
Supporting protocol for PROFI-safe	No
Supporting protocol for SafetyBUS p	No
Radio standard GPRS	No
Radio standard GSM	No
Radio standard UMTS	No
With SW interfaces	Yes
Type of display	TFT
Number of colours of the display	1.67E7
Power supply	24 V
North American temperature code	T4A
Real-time clock	Yes
CPU speed	800 MHz
Flash memory (ROM), min	256 MB
SDRAM (RAM), min	256 MB
Recipe	50 recipe files
Preferred controller	Micro800, MicroLogix
Battery lifespan, min	5 years @ 25 °C (77 °F)
External memory storage	USB port and micro-SD (secure digital) card - industrial grade micro-SD cards recommended, supports SDSC and class 6 & class 10 SDHC micro-SD cards, FAT32/16 formats, up to 32 GB maximum size
Mechanical	
Built-in depth	55 mm

Width of the front	287 mm
Height of the front	225 mm
Wall mounting/direct mounting	Yes
Mounted depth	51 mm
Cutout dimensions, approx	Height: 206.0 ±0.5 mm (8.11 ±0.02 inch) Width: 269.0 ±0.5 mm (10.59 ±0.02 inch)
Rail mounting possible	No

## Environmental

Degree of protection (NEMA), front side	4X
Degree of protection (IP), front side	IP65
Operating temperature	0 °C
Heat dissipation	61 BTU/hr
Shock	Operating: IEC 60068-2-27 (Test Ea, unpackaged shock), 15 G
Vibration	IEC 60068-2-6 (Test Fc, operating), 2 G @ 10...500 Hz
Relative humidity	IEC 60068-2-30 (Test Db, unpackaged damp heat), 5...95% noncondensing
Temperature surrounding air	50 °C
List of degrees of protection (NEMA), front side	NEMA/UL Type 4X (indoor) 12, 13
Wiring category	3-on power ports, 2-communication ports
ESD immunity	IEC 61000-4-2: 4 kV contact discharges, 8 kV air discharges
Conducted RF immunity	IEC 61000-4-6, 10V rms with 1 kHz sine-wave 80% AM from 150 kHz...80 MHz
EFT/B immunity	IEC 61000-4-4, ±2 kV @ 5 kHz on power ports, ±1 kV @ 5 kHz on communication ports
Surge transient immunity	IEC 61000-4-5, ±500V line-line (DM) and ±500V line-earth (CM) on DC power ports, ±1 kV line-earth (CM) on communication ports
Nonoperating temperature	IEC 60068-2-1 (Test Ab, unpackaged nonoperating cold), IEC 60068-2-2 (Test Bb, unpackaged nonoperating dry heat), IEC 60068-2-14 (Test Na, unpackaged nonoperating thermal shock), -25...70 °C (-13...158 °F)
Radiated RF immunity	IEC 61000-4-3: 10V/m with 1 kHz sine-wave 80% AM from 80...2000 MHz, 10V/m with 200 Hz 50% pulse 100% AM @ 900 MHz, 10V/m with 200 Hz 50% pulse 100% AM @ 1890 MHz, 10V/m with 1 kHz sine-wave 80% AM from 2000...2700 MHz,

## Construction

Weight, approx	1.64 g
----------------	--------

---

Viewing area	Width: 211.2 mm (8.31 inch) Height: 158.4 mm (6.24 inch)
Wire type	Copper
Wire size	Input power terminal block, Stranded or solid, Cu 90 °C (194 °F), Single-wire gauge: 0.33...2.08 mm <sup>2</sup> (22...14 AWG), Dual-wire gauge: 0.33...1.31 mm <sup>2</sup> (22...16 AWG)

---



Copyright ©2022 Rockwell Automation, Inc.