

adapter 12x 12 mm Accessory for: 3VA1/2 1000 3VA5/6 800



Model	
product brand name	SETRON
product designation	Shaft coupling
size of cross-section of the shaft of door-coupling rotary operating mechanism	12x12 mm
suitability for use	for 3VA1/2 1000 3VA5/6 800

Product details	
product description	12x 12 mm
product component	No
<ul style="list-style-type: none"> extension shaft 	No

Approvals Certificates	
General Product Approval	Test Certificates



EG-Konf.



UL



VDE



[Type Test Certificates/Test Report](#)

Marine / Shipping	other	Environment
-------------------	-------	-------------



LRS

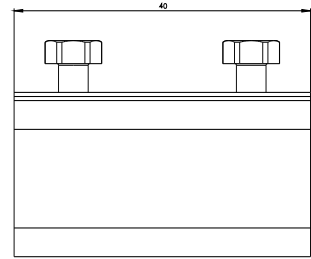
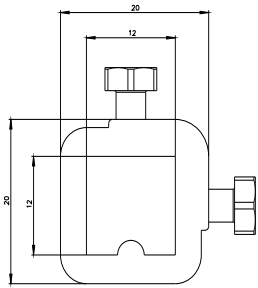
[Confirmation](#)

[Miscellaneous](#)

[Environmental Confirmations](#)

Further information

- Information on the packaging
<https://support.industry.siemens.com/cs/ww/en/view/109813875>
- Information- and Downloadcenter (Catalogs, Brochures,...)
<http://www.siemens.com/lowvoltage/catalogs>
- Industry Mall (Online ordering system)
<https://mall.industry.siemens.com/mall/en/en/Catalog/product?mlfb=8UD1900-4DA00>
- Service&Support (Manuals, Certificates, Characteristics, FAQs,...)
<https://support.industry.siemens.com/cs/ww/en/ps/8UD1900-4DA00>
- Image database (product images, 2D dimension drawings, 3D models, device circuit diagrams, ...)
http://www.automation.siemens.com/bilddb/cax_en.aspx?mlfb=8UD1900-4DA00
- CAX-Online-Generator
<http://www.siemens.com/cax>
- Tender specifications
<http://www.siemens.com/specifications>



last modified:

7/29/2022 

