

accessory for VL400, masking frame for door cut-out IP40, for fixed/plug-in mounting with RCD module (RCD) spare part product only for replacement purposes

Versão	
nome da marca do produto	SETRON
designação do produto	moldura de painel para corte da porta
versão do produto	IP40, para montagem fixa / encaixável
Acessórios	
acessório	acessórios para VL400
Projeto mecânico	
Peso líquido por ME	0,044 kg
Homologações certificados	
Environment	General Product Approval

[Environmental Con-  
firmations](#)

[Environmental Con-  
firmations](#)



### Outras informações

Informações sobre a embalagem

[Informações sobre a embalagem](#)

Information for data generation and storage

<https://support.industry.siemens.com/cs/ww/en/view/109995012>

Information- and Downloadcenter (Catalogs, Brochures,...)

<https://www.siemens.com/lowvoltage/catalogs>

Industry Mall (Online ordering system)

<https://mall.industry.siemens.com/mall/pt/pt/Catalog/product?mlfb=3VL9400-8BD00>

Service&Support (Manuals, Certificates, Characteristics, FAQs,...)

<https://support.industry.siemens.com/cs/ww/pt/ps/3VL9400-8BD00>

Image database (product images, 2D dimension drawings, 3D models, device circuit diagrams, ...)

[https://www.automation.siemens.com/bilddb/cax\\_en.aspx?mlfb=3VL9400-8BD00](https://www.automation.siemens.com/bilddb/cax_en.aspx?mlfb=3VL9400-8BD00)

CAX-Online-Generator

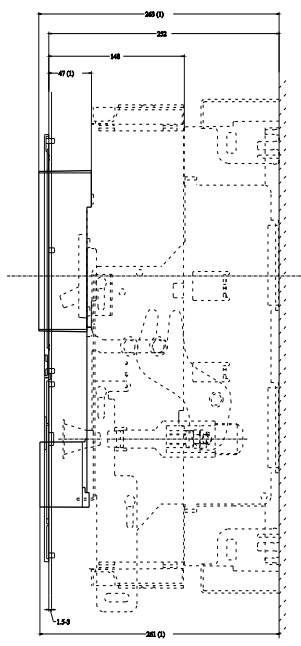
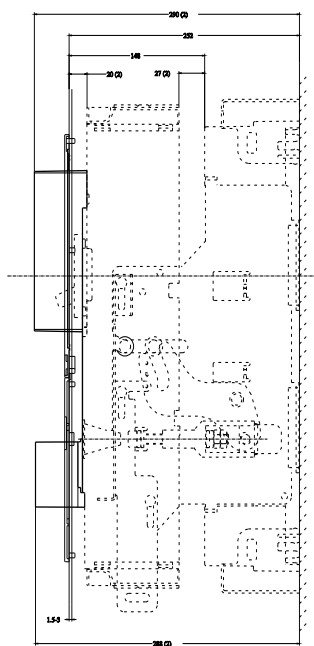
<https://www.siemens.com/cax>

Tender specifications

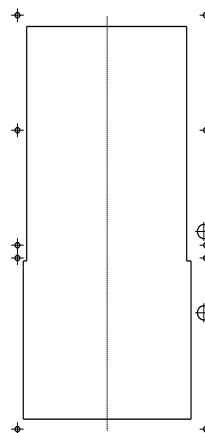
<https://www.siemens.com/specifications>

Curvas características

[https://curves.simaris.siemens.com/curves/<mmp\\_prod\\_noCOMP="HAUPT"></mmp\\_prod\\_no>](https://curves.simaris.siemens.com/curves/<mmp_prod_noCOMP=)



(1) Betriebsstellung  
(2) Trennstellung



última alteração:

05/08/2025 

