



Switch disconnecter 16A, Size 1, 3-pole Front operating mechanism left Complete unit with direct operating mechanism gray Box terminal

| Model | |
|---|---------------------------|
| product brand name | SENTRON |
| product designation | 3KD switch disconnecter |
| design of the product | Switch |
| display version for switch position indicator manual operation | ON-OFF-TEST |
| design of the actuating element | Long rotary knob |
| type of the driving mechanism | Front operating mechanism |
| type of the driving mechanism motor drive | No |
| General technical data | |
| number of poles | 3 |
| type of device | fixed mounting |
| size of switch disconnecter | 1 |
| mechanical service life (operating cycles) typical | 15 000 |
| electrical endurance (operating cycles) | |
| • at AC-23 A at 690 V | 6 000 |
| • at DC-23 A at 440 V | 1 500 |
| I ² t value | |
| • with closed switch at 1000 V for combination switch +gG/aM SITOR fuse maximum | 2 331 A ² ·s |
| • of the fuse at 500 V maximum permissible | 26 505 A ² ·s |
| • of the gG fuse at 690 V maximum permissible | 24 005 A ² ·s |
| • of the gG/aM SITOR fuse at 1000 V maximum permissible | 6 000 A ² ·s |
| • of the molded case circuit breaker at 415 V maximum permissible | 480 000 A ² ·s |
| position of the switch operating mechanism | at the left end |
| overvoltage in percent relative to the operating voltage at AC at 400, 500, 690 V at 50/60 Hz | 10 % |
| overvoltage category | III |
| degree of pollution | 3 |
| Voltage | |
| operating voltage with current paths in series | |
| • with degree of pollution 2 at DC rated value | 440 V / 3 |
| • with degree of pollution 3 at DC rated value | 440 V / 3 |
| insulation voltage | |
| • rated value | 1 000 V |
| surge voltage resistance rated value | 8 kV |
| operational current at AC-22 A at 1000 V maximum | 16 A |
| let-through current of the fuse at 500 V maximum permissible | 12 500 A |
| let-through current of the gG fuse at 690 V maximum | 14 700 A |

| | |
|--|-------------------------------|
| permissible | |
| Supply voltage | |
| operating voltage at AC rated value | 1 000 V |
| Protection class | |
| protection class IP | IP20 |
| protection class IP | |
| • with closed switch with cover or cable lug cover | IP20 |
| • on the front | IP20 |
| Dissipation | |
| power loss [W] | |
| • with conventional rated thermal current per pole | 0.1 W |
| • with conventional rated thermal current per device | 0.3 W |
| • for rated value of the current at AC in hot operating state per pole | 0.1 W |
| Main circuit | |
| operating power | |
| • at AC-23 A at 500 V rated value | 8 kW |
| operational current rated value | 16 A |
| Auxiliary circuit | |
| number of connected NC contacts for auxiliary contacts | 0 |
| number of connected NO contacts for auxiliary contacts | 0 |
| number of connected CO contacts for auxiliary contacts | 0 |
| number of CO contacts for auxiliary contacts | 4 |
| number of NC contacts for auxiliary contacts | 0 |
| number of NO contacts for auxiliary contacts | 0 |
| Suitability | |
| suitability for use main switch | Yes |
| suitability for use switch disconnecter | Yes |
| suitability for use EMERGENCY OFF switch | No |
| suitability for use safety switch | Yes |
| suitability for use maintenance/repair switch | Yes |
| Product details | |
| product feature interlock | Yes |
| product component | |
| • trip indicator | No |
| • voltage trigger | No |
| • undervoltage release | No |
| • undervoltage release with leading contact | No |
| product extension auxiliary switch | Yes |
| product extension optional | |
| • motor drive | No |
| • voltage trigger | No |
| Short circuit | |
| short-time withstand current (I _{cw}) at 1000 V AC/440 V DC limited to 1 s rated value | 3 kA |
| short-circuit current making capacity (I _{cm}) for switch disconnecter | |
| • at 1000 V AC without fuse link rated value minimum | 7 kA |
| • at DC 440 V without fuse link rated value minimum | 7 kA |
| • without fuse link rated value minimum | 7 kA |
| conditional short-circuit current with line-side fuse protection | |
| • at 415 V by molded case circuit breaker rated value | 36 kA |
| • at 500 V by gG fuse rated value | 100 kA |
| • at 690 V by gG fuse rated value | 100 kA |
| Connections | |
| type of connectable conductor cross-sections with flexible busbar | 2x (0,8x9 mm ²) |
| type of connectable conductor cross-sections | |
| • for copper busbar | '1 x (2 x 9 mm ²) |
| type of connectable conductor cross-sections for copper conductor | |

| | |
|--|--------------------------------|
| <ul style="list-style-type: none"> • solid | 1x (1 ... 16 mm ²) |
| <ul style="list-style-type: none"> • finely stranded with core end processing | 1x (1 ... 35 mm ²) |
| <ul style="list-style-type: none"> • stranded | 1x (6 ... 35 mm ²) |
| type of electrical connection for main current circuit | box terminal |

Mechanical Design

| | |
|---|---|
| height | 119 mm |
| width | 94 mm |
| depth | 87 mm |
| fastening method | Screw fixing and standard rail mounting 35 mm |
| fastening method <ul style="list-style-type: none"> • 4-hole front mounting • front mounting with central attachment • rail mounting | No No Yes |
| mounting position | any |
| net weight | 831 g |

Environmental conditions

| | |
|---|-----------------|
| ambient temperature during operation <ul style="list-style-type: none"> • minimum • maximum | -25 °C 70 °C |
| ambient temperature during storage <ul style="list-style-type: none"> • minimum • maximum | -50 °C 80 °C |

Certificates

| | |
|---|---|
| reference code according to IEC 81346-2 | Q |
|---|---|

Approvals Certificates

General Product Approval



[Confirmation](#)



[Miscellaneous](#)

| | | | |
|--------------------------|-------------------|-------------------|-------|
| General Product Approval | Test Certificates | Marine / Shipping | other |
|--------------------------|-------------------|-------------------|-------|



[Type Test Certificates/Test Report](#)



[Miscellaneous](#)

[Confirmation](#)

Environment

[Environmental Conformations](#)

[Environmental Conformations](#)

Further information

Information on the packaging

<https://support.industry.siemens.com/cs/ww/en/view/109813875>

Information- and Downloadcenter (Catalogs, Brochures,...)

<http://www.siemens.com/lowvoltage/catalogs>

Industry Mall (Online ordering system)

<https://mall.industry.siemens.com/mall/en/en/Catalog/product?mlfb=3KD1632-2ME10-0>

Service&Support (Manuals, Certificates, Characteristics, FAQs,...)

<https://support.industry.siemens.com/cs/ww/en/ps/3KD1632-2ME10-0>

Image database (product images, 2D dimension drawings, 3D models, device circuit diagrams, ...)

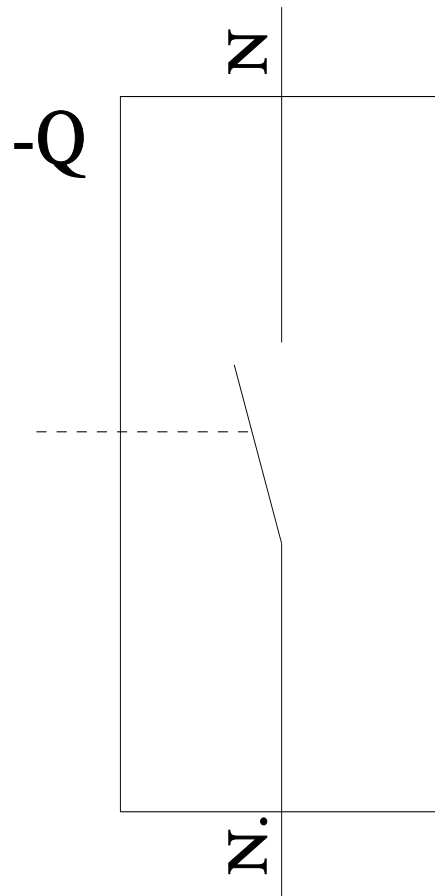
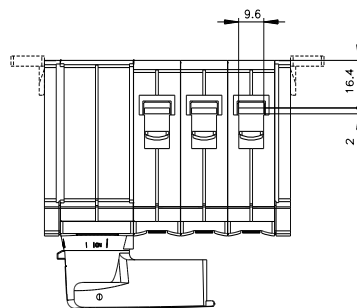
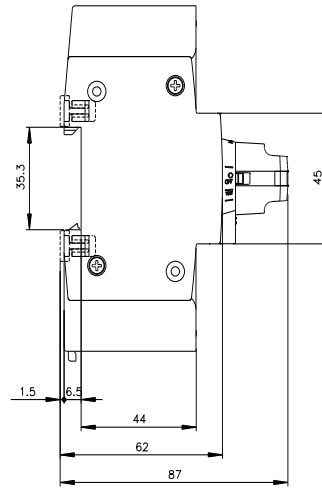
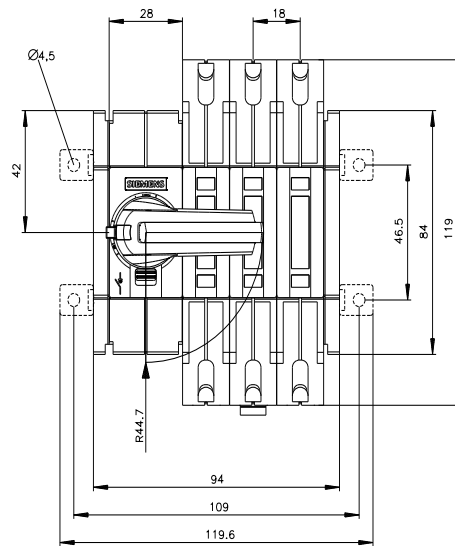
http://www.automation.siemens.com/bilddb/cax_en.aspx?mlfb=3KD1632-2ME10-0

CAX-Online-Generator

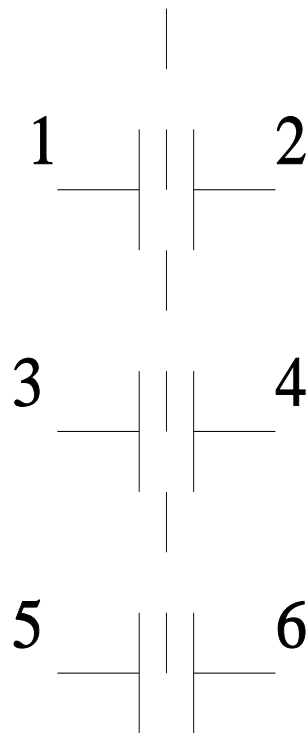
<http://www.siemens.com/cax>

Tender specifications

<http://www.siemens.com/specifications>



-CR



last modified:

2/1/2024 

