

MLFB-Ordering data 6SL3000-0CE37-7AA0

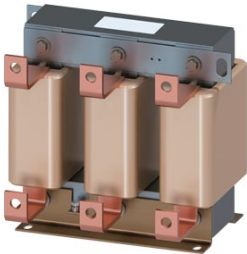


Figure similar

Client order no. :

Order no. :

Offer no. :

Remarks :

Item no. :

Consignment no. :

Project :

Rated data	Connections
------------	-------------

Input	
Number of phases	3 AC
Line voltage	380 ... 480 V

Output	
Rated current	773.0 A

Load side	
Version	1 x hole for M12

Mechanical data

Dimensions	
Width	300.0 mm (11.8 in)
Height	269.0 mm (10.6 in)
Depth	212.0 mm (8.3 in)
Degree of protection	IP00
Net weight	51.3 kg (113.0 lb)

PE connection	
Version	M6 screw