



SENTRON, Fuse switch disconnecter 3NP1, 3-pole, NH00, 160 A, for Busbar system 8US 60 mm, flat terminal, Cover level 32/70 mm

| Model | |
|--|-----------------------------|
| product designation | Fuse switch disconnecter |
| busbar design | busbar thickness 5 or 10 mm |
| design of the safety monitoring | Without |
| design of the load switch strip form | No |
| type of the driving mechanism motor drive | No |
| General technical data | |
| number of poles | 3 |
| type of device | For 60 mm 8US busbar system |
| size of disconnecting link | 00 and 000 |
| size of fuse link | NH000, NH00 |
| let-through current with closed switch maximum | 23 kA |
| mechanical service life (operating cycles) typical | 2 000 |
| I ² t value with closed switch maximum | 223 kA ² .s |
| power factor | |
| • at AC-22 B | 0.65 |
| • at AC-23 B | 0.45 |
| • with capacitive load | -0.25 |
| fuse system | LV HRC fuse |
| degree of pollution | 3 |
| Voltage | |
| insulation voltage | |
| • rated value | 690 V |
| • with degree of pollution 3 at AC rated value | 690 V |
| • with degree of pollution 2 at AC rated value | 1 000 V |
| power factor at AC-21 B | 0.95 |
| surge voltage resistance rated value | 8 kV |
| operational current | |
| • at 35 °C rated value | 160 A |
| • at 40 °C rated value | 155 A |
| • at 45 °C rated value | 145 A |
| • at 50 °C rated value | 140 A |
| • at 55 °C rated value | 133 A |
| • at AC-21 B at 240 V rated value | 160 A |
| • at AC-21 B at 400 V rated value | 160 A |
| • at AC-21 B at 500 V rated value | 160 A |
| • at AC-21 B at 690 V rated value | 160 A |
| • at AC-22 B at 240 V rated value | 160 A |
| • at AC-22 B at 400 V rated value | 160 A |
| • at AC-22 B at 500 V rated value | 160 A |

| | |
|--|---|
| <ul style="list-style-type: none"> • at AC-22 B at 690 V rated value • at AC-23 B at 690 V rated value • at AC-23 B at 500 V rated value • at AC-23 B at 400 V rated value • at AC-23 B at 240 V rated value • at DC-21 B at 120 V rated value • at DC-21 B at 240 V rated value • at DC-21 B at 440 V rated value • at DC-22 B at 120 V rated value • at DC-22 B at 240 V rated value • at DC-22 B at 440 V rated value • at DC-23 B at 120 V rated value • at DC-23 B at 240 V rated value • at DC-23 B at 440 V rated value | 125 A 35 A 63 A 160 A 160 A 160 A 160 A 160 A 160 A 160 A 125 A 100 A 100 A 63 A |
| let-through current with high-speed activation maximum permissible | 15 kA |
| operating voltage <ul style="list-style-type: none"> • at AC rated value maximum • at DC rated value • at DC rated value maximum | 690 V 440 V 440 V |
| Protection class | |
| protection class IP <ul style="list-style-type: none"> • with closed switch with cover or cable lug cover • with closed switch without cover or cable lug cover • open | IP40 IP30 IP20 |
| Dissipation | |
| power loss [W] <ul style="list-style-type: none"> • with conventional rated thermal current without fuse per pole • with conventional rated thermal current without fuse per device • for rated value of the current at AC in hot operating state per pole • of the fuse per fuse maximum | 5 W 15 W 17 W 12 W |
| Main circuit | |
| operational current <ul style="list-style-type: none"> • rated value • with capacitive load at 400 V rated value • with capacitive load at 500 V rated value | 160 A 72 A 55 A |
| Auxiliary circuit | |
| number of CO contacts for auxiliary contacts | 0 |
| number of NC contacts for auxiliary contacts | 0 |
| number of NO contacts for auxiliary contacts | 0 |
| Suitability | |
| suitability for use main switch | No |
| suitability for use switch disconnecter | Yes |
| suitability for use EMERGENCY OFF switch | No |
| suitability for use safety switch | Yes |
| suitability for use maintenance/repair switch | Yes |
| Product details | |
| product function phase failure monitoring | No |
| product component <ul style="list-style-type: none"> • undervoltage release • undervoltage release with leading contact | No No |
| product feature sealable | Yes |
| product extension auxiliary switch | Yes |
| product extension optional <ul style="list-style-type: none"> • locking capability • phase failure monitoring • fuse monitoring • voltage trigger • overvoltage protection monitoring | Yes Yes Yes No Yes |

| Product function | |
|--|---------------------|
| product function overvoltage protection monitoring | No |
| Short circuit | |
| conditional short-circuit current (I_q) | |
| • at AC at 240 V with high-speed activation rated value | 80 kA |
| • at AC at 500 V with high-speed activation rated value | 80 kA |
| • at AC at 690 V with high-speed activation rated value | 50 kA |
| • with closed switch at AC at 240 V rated value | 120 kA |
| • with closed switch at AC at 500 V rated value | 120 kA |
| • with closed switch at AC at 690 V rated value | 100 kA |
| Connections | |
| arrangement of electrical connectors for main current circuit | other |
| connectable conductor cross-section for main contacts | |
| • solid or stranded minimum | 2.5 mm ² |
| • solid or stranded maximum | 95 mm ² |
| • stranded minimum | 2.5 mm ² |
| • stranded maximum | 95 mm ² |
| tightening torque with screw-type terminals | |
| • minimum | 10 N·m |
| • maximum | 12 N·m |
| type of connectable conductor cross-sections of the laminated conductors maximum | 24 x 12 mm |
| type of connection technology | Flat terminal |
| Mechanical Design | |
| height | 206.2 mm |
| width | 105.8 mm |
| width of the busbar | |
| • minimum | 12 mm |
| • maximum | 30 mm |
| depth | 137.5 mm |
| fastening method | busbar |
| fastening method | |
| • floor mounting | No |
| • rail mounting | Yes |
| mounting position | horizontal/vertical |
| busbar center-to-center spacing | 60 mm |
| net weight | 0.98 kg |
| Environmental conditions | |
| ambient temperature during operation | |
| • minimum | -25 °C |
| • maximum | 55 °C |
| ambient temperature during storage | |
| • minimum | -50 °C |
| • maximum | 80 °C |
| Certificates | |
| reference code according to IEC 81346-2 | Q |
| Approvals Certificates | |
| General Product Approval | |



[Confirmation](#)



General Product Approval

Test Certificates

Marine / Shipping

[Miscellaneous](#)



[Type Test Certificates/Test Report](#)

[Special Test Certificate](#)



[Confirmation](#)[Miscellaneous](#)[Environmental Con-
firmations](#)[Environmental Con-
firmations](#)

Further information

Information on the packaging

<https://support.industry.siemens.com/cs/ww/en/view/109813875>

Information- and Downloadcenter (Catalogs, Brochures,...)

<http://www.siemens.com/lowvoltage/catalogs>

Industry Mall (Online ordering system)

<https://mall.industry.siemens.com/mall/en/en/Catalog/product?mlfb=3NP1133-1BC10>

Service&Support (Manuals, Certificates, Characteristics, FAQs,...)

<https://support.industry.siemens.com/cs/ww/en/ps/3NP1133-1BC10>

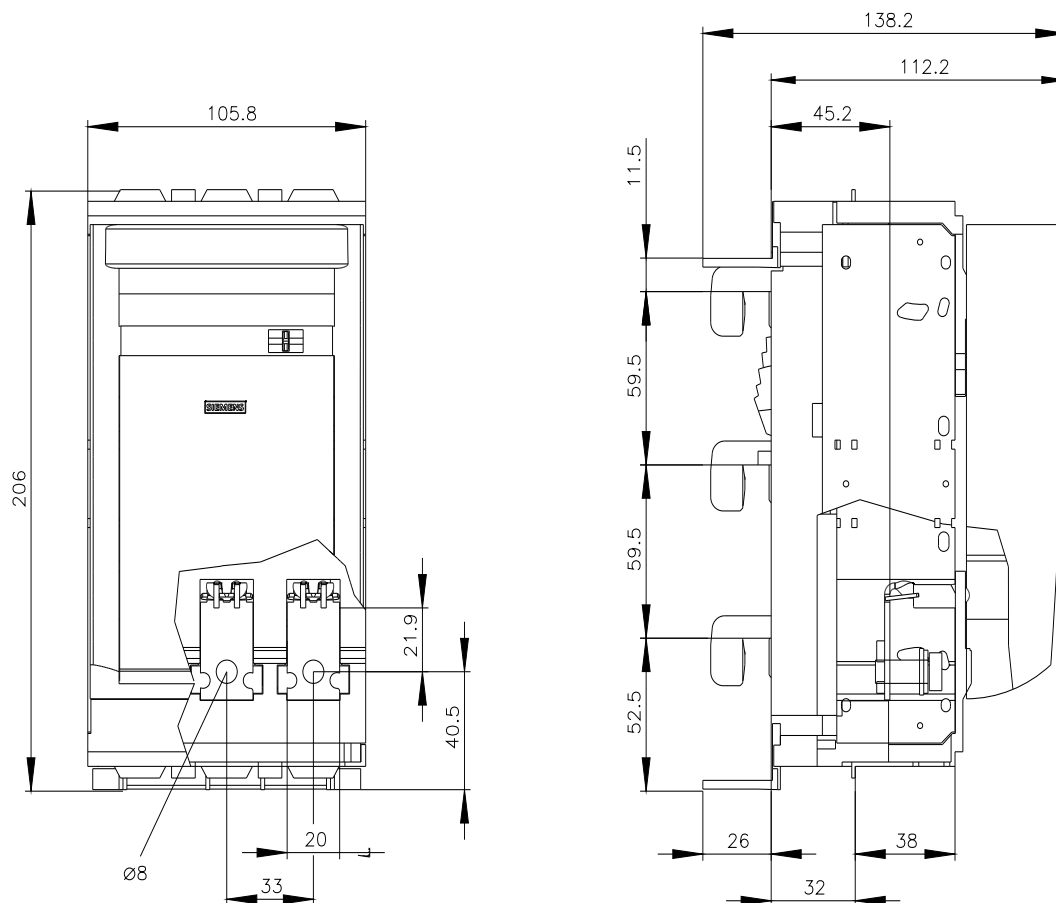
Image database (product images, 2D dimension drawings, 3D models, device circuit diagrams, ...)

http://www.automation.siemens.com/bilddb/cax_en.aspx?mlfb=3NP1133-1BC10

CAx-Online-Generator

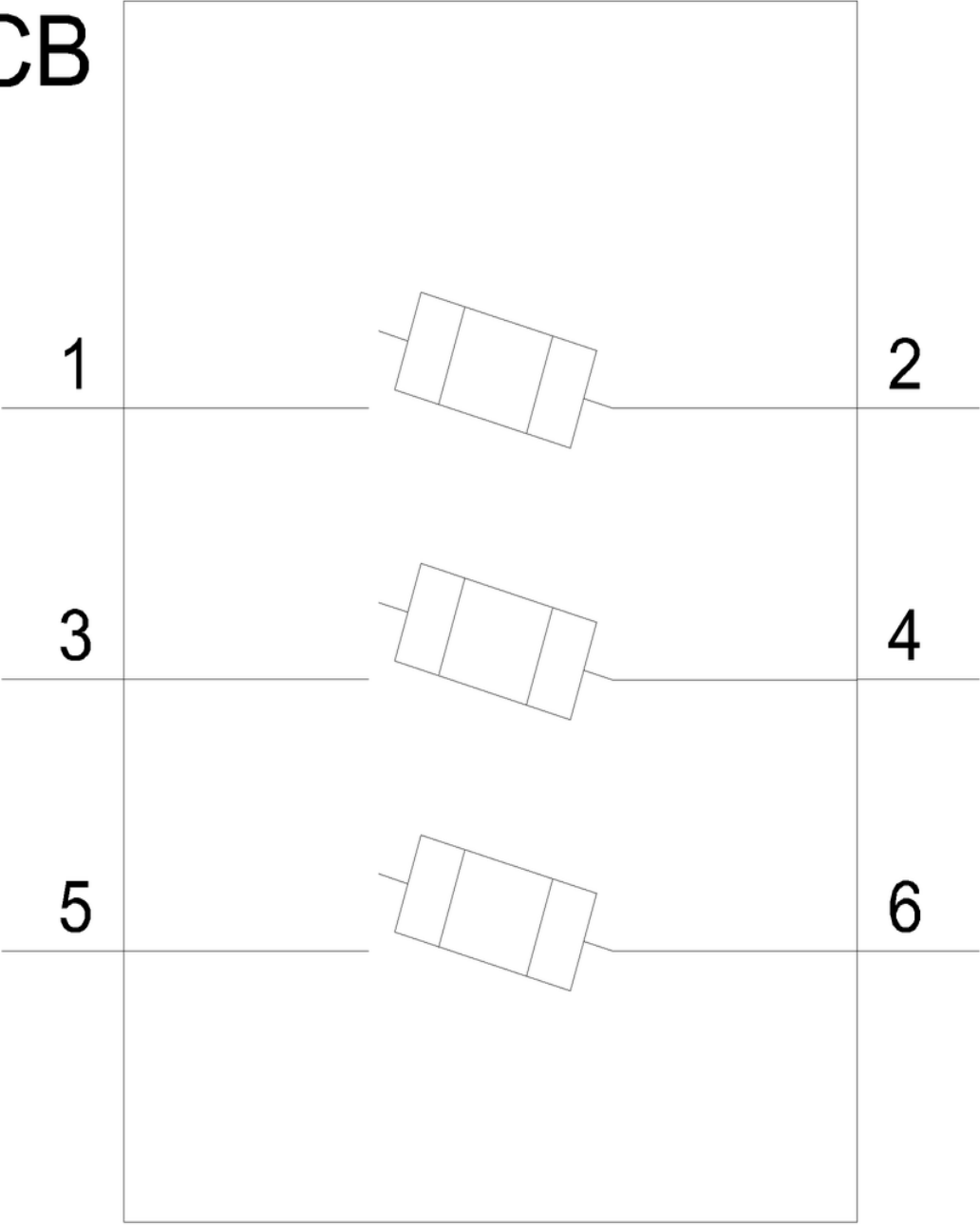
<http://www.siemens.com/cax>

Tender specifications

<http://www.siemens.com/specifications>



CB



last modified:

9/28/2024 

